



# THE GATE CLOSER SPECIALISTS

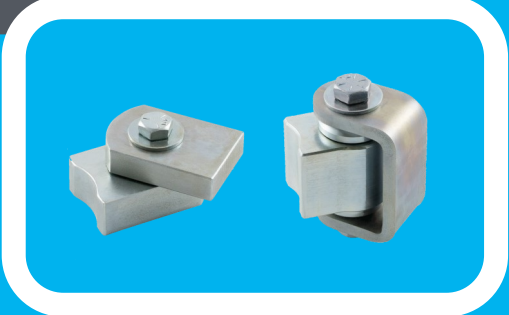
## BADASS Gate Hinges

For gate closers and operators to work at their best, reliable low friction hinges are essential. BadAss hinges will handle all the stresses and loads, allowing gates to swing freely. That's why customers in the U.S.A. use them in preference to other hinges.

The difference is in the high quality bearings and the precision machined hinge bodies. The bearings and hinge bodies are manufactured to the tightest tolerances in the industry which is one reason they stand up to the stresses and loads they have to endure. BadAss hinge bearings are pre-packed with grease before leaving the factory and need no further greasing throughout their life. A real winner for the customer.

During installation, the heat resistant materials used in the manufacture of BadAss hinge bearings enable each hinge to be welded in place without removing the hinge bearings. This not only saves time, it also maintains the highest performance levels possible.

To compliment the weld-on range of hinges, we have a selection of bolt-on hinges. As with the weld-on range, each hinge part is protected by high quality, zinc finish electroplating to ensure maximum corrosion resistance, even in difficult environments.



### Key features:

Electroplated zinc finish	Yes
Weld-on and bolt-on options	Yes
Virtually frictionless movement	Yes
Horizontal alignment adjustment	Yes
Vibration resistant Stover lock nuts	Yes
Sealed maintenance free bearings	Yes
Mount to round tube or flat face gate	Yes
Need to remove plating before welding	No
Need to remove bearings before welding	No

**If you need "Rugged" .... Insist on BadAss**

# BADASS Hinges



**CI3000**



**CI3500**



**CI3520**



**CI3600**



**CI3700**



**CI3750**



**CI3850**



**CI3900 & CI3925**



**CI3950**

Hinge Code	Hinge Name	Gap Variance	Finish	Sealed Bearings	Max Gate Weight	Max Gate Load	Yoke Material	Body Material	Height	Weight
CI3000	Weld-on Original BadAss	2.4-2.9" (61-74mm)	Zinc	2	1,100lbs (500kg)	2,000lbs (900kg)	Steel	Steel	3.8" (97mm)	2.5lbs (1.1kg)
CI3500	Weld-on Heavy Duty BadAss	2.4-2.9" (61-74mm)	Zinc	3	1,500lbs (680kg)	3,000lbs (1,360kg)	Steel	Steel	3.8" (97mm)	3.5lbs (1.6kg)
CI3520	Weld-on 100 Year BadAss	2.5-3.0" (64-76mm)	Zinc	3	1,500 lbs (680kg)	3,000 lbs (1,360kg)	Steel	Steel	4.1" (104mm)	3.5lbs (1.6kg)
CI3600	Weld-on Baby BadAss	2.5-3.0" (64-76mm)	Zinc	1	300 lbs (140kg)	500 lbs (230kg)	Steel	Steel	1.3" (33mm)	1lbs (0.5kg)
CI3700	Bolt-on BadAss	2.9-3.4" (74-86mm)	Zinc	2	1,000lbs (450kg)	2,000lbs (900kg)	Steel	Steel	7.5" (191mm)	3.5lbs (1.6kg)
CI3750	Baby Bolt-on BadAss	3.0-3.5" (76-89mm)	Zinc	1	250lbs (110kg)	600lbs (270kg)	Steel	Steel	4.0" (102mm)	2.0lbs (1.1kg)
CI3850	Weld-on Self-closing BadAss Set	2.4-2.9" (61-74mm)	Zinc	2	300lbs (140kg)	2,000lbs (900kg)	Steel	Steel	5.0" (127mm)	5.5lbs (2.5kg)
CI3900	Weld-on 6" BadAss Strap Hinge	Fixed 1/2" (13mm)	Zinc	4	1,500 lbs (680kg)	3,000 lbs (1,360kg)	Steel	Steel	5.9" (150mm)	6 lbs (2.7kg)
CI3925	Weld-on 10" BadAss Strap Hinge	Fixed 1/2" (13mm)	Zinc	4	1,500 lbs (680kg)	3'000 lbs (1,360kg)	Steel	Steel	5.9" (150mm)	7.5 lbs (3.4kg)
CI3950	Bolt-on / Weld-on Barrel BadAss	Fixed 1/2" (13mm)	Zinc	4	1,500 lbs (680kg)	3,000 lbs (1,360kg)	Steel	Steel	5.9" (150mm)	4 lbs (1.8kg)